

Festo Develops a New Compact Cylinder for its Simplified Electric Motion Series of Actuators

The EPCE cylinder provides an economical electric solution for basic end-to-end motion.

Festo introduces the [EPCE](#) compact electric cylinder for fast movement in such applications as sorting, distribution, and testing. The EPCE features easy set-up and economical prices similar to the other six [Simplified Motion Series](#) electric actuators and is designed for machines and lab instrumentation equipment where pneumatic actuation is simply not feasible.

The EPCE converts the rotary motion of the mounted motor into the linear motion of a piston rod or rods via an internal toothed belt drive. The EPCE toothed belt technology provides maximum dynamic response and minimal positioning times. Its small zero stroke and compact footprint make the EPCE an ideal choice for confined footprint applications.

Based on the location and number of piston rod(s), there are numerous EPCE variants available. These variations include piston rod(s) on the left or right sides, front or rear, through the unit, or in the opposing direction. Up to four piston rods per unit are available. Working stroke ranges from 5 to 80 mm.

As with all Simplified Motion Series end-to-end electric-motion units, the EPCE is plug and play for fast startup. All parameters can be manually set directly on the drive. No additional software or specific know-how is required.

Control options include integrated digital I/O and IO-Link. These economical units offer optimized motion characteristics, including gentle cushioning while advancing and retracting into the end positions or when pressing and clamping. Units include toothed belt axis, spindle and toothed belt axis, mini slide, electric cylinder, and rotary drive.

For more information about the new EPCE and the Simplified Motion Series call 800-993-3786 and to see the full range of Festo products and solutions visit <https://www.festo.us>.

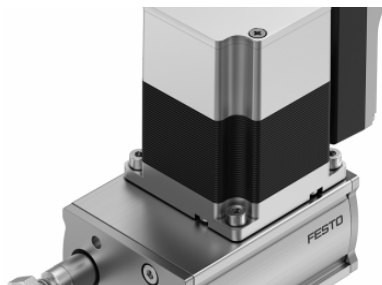
06. April 2021

Responsible
according to press
law:
Christian Österle



Download/View press
release and press
images.

Press Images

**Festo EPCE**

The EPCE cylinder provides an economical electric solution for basic end-to-end motion.